

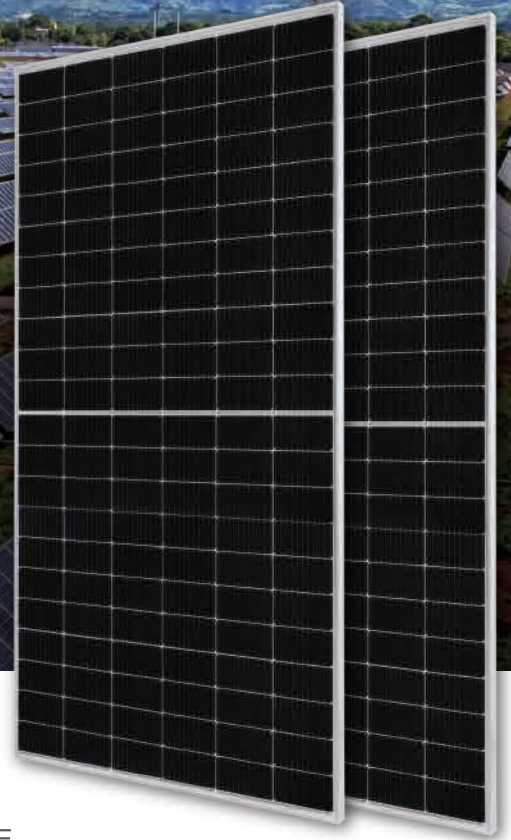
DEEP BLUE 3.0

Mono

505W MBB Half-cell Module
JAM66S30 480-505/MR Series

Introduction

Assembled with 11BB PERC cells, the half-cell configuration of the modules offers the advantages of higher power output, better temperature-dependent performance, reduced shading effect on the energy generation, lower risk of hot spot, as well as enhanced tolerance for mechanical loading.



Higher output power



Lower LCOE



Less shading and lower resistive loss

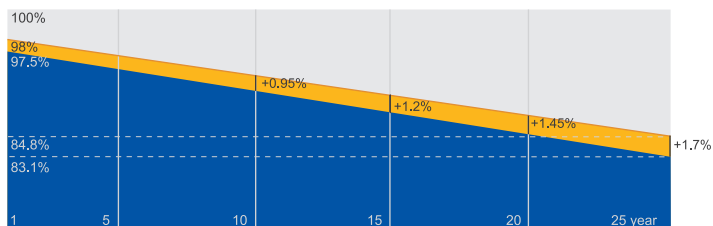


Better mechanical loading tolerance

Superior Warranty

- 12-year product warranty
- 25-year linear power output warranty

0.55% Annual Degradation Over 25 years



■ New linear power warranty ■ Standard module linear power warranty

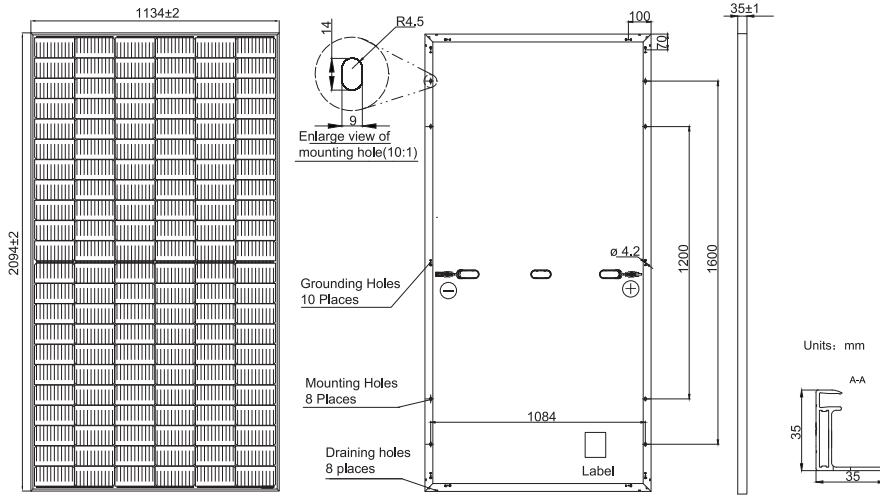
Comprehensive Certificates

- IEC 61215, IEC 61730, UL 61215, UL 61730
- ISO 9001: 2015 Quality management systems
- ISO 14001: 2015 Environmental management systems
- ISO 45001: 2018 Occupational health and safety management systems
- IEC TS 62941: 2016 Terrestrial photovoltaic (PV) modules – Guidelines for increased confidence in PV module design qualification and type approval



MECHANICAL DIAGRAMS

SPECIFICATIONS



Cell	Mono
Weight	26.3kg±3%
Dimensions	2094±2mm×1134±2mm×35±1mm
Cable Cross Section Size	4mm ² (IEC) , 12 AWG(UL)
No. of cells	132(6×22)
Junction Box	IP68, 3 diodes
Connector	QC 4.10(1000V) QC 4.10-35(1500V)
Cable Length (Including Connector)	Portrait: 300mm(+)/400mm(-); Landscape: 1200mm(+)/1200mm(-)
Packaging Configuration	31pcs/Pallet, 682pcs/40ft Container

Remark: customized frame color and cable length available upon request

ELECTRICAL PARAMETERS AT STC

TYPE	JAM66S30 -480/MR	JAM66S30 -485/MR	JAM66S30 -490/MR	JAM66S30 -495/MR	JAM66S30 -500/MR	JAM66S30 -505/MR
Rated Maximum Power(Pmax) [W]	480	485	490	495	500	505
Open Circuit Voltage(Voc) [V]	45.07	45.20	45.33	45.46	45.59	45.72
Maximum Power Voltage(Vmp) [V]	37.62	37.81	37.99	38.17	38.35	38.53
Short Circuit Current(Isc) [A]	13.65	13.72	13.79	13.86	13.93	14.00
Maximum Power Current(Imp) [A]	12.76	12.83	12.90	12.97	13.04	13.11
Module Efficiency [%]	20.2	20.4	20.6	20.8	21.1	21.3
Power Tolerance	0~+5W					
Temperature Coefficient of Isc(α _{Isc})	+0.045%/°C					
Temperature Coefficient of Voc(β _{Voc})	-0.275%/°C					
Temperature Coefficient of Pmax(γ _{Pmp})	-0.350%/°C					
STC	Irradiance 1000W/m ² , cell temperature 25°C, AM1.5G					

Remark: Electrical data in this catalog do not refer to a single module and they are not part of the offer.They only serve for comparison among different module types.

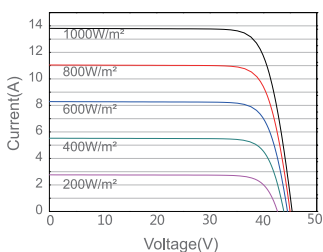
ELECTRICAL PARAMETERS AT NOCT

OPERATING CONDITIONS

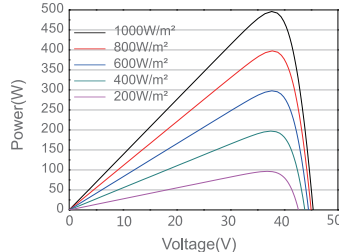
TYPE	JAM66S30 -480/MR	JAM66S30 -485/MR	JAM66S30 -490/MR	JAM66S30 -495/MR	JAM66S30 -500/MR	JAM66S30 -505/MR		
Rated Max Power(Pmax) [W]	363	367	370	374	378	382	Maximum System Voltage	1000V/1500V DC
Open Circuit Voltage(Voc) [V]	42.15	42.30	42.43	42.58	42.72	42.86	Operating Temperature	-40°C~+85°C
Max Power Voltage(Vmp) [V]	35.54	35.67	35.76	35.84	35.93	36.02	Maximum Series Fuse Rating	25A
Short Circuit Current(Isc) [A]	10.99	11.06	11.13	11.20	11.27	11.34	Maximum Static Load,Front* Maximum Static Load,Back*	5400Pa(112lb/ft ²) 2400Pa(50lb/ft ²)
Max Power Current(Imp) [A]	10.21	10.28	10.36	10.44	10.52	10.60	NOCT	45±2°C
NOCT	Irradiance 800W/m ² , ambient temperature 20°C,wind speed 1m/s, AM1.5G						Safety Class	Class II
							Fire Performance	UL Type 1

CHARACTERISTICS

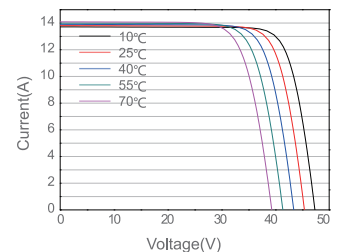
Current-Voltage Curve JAM66S30-495/MR



Power-Voltage Curve JAM66S30-495/MR



Current-Voltage Curve JAM66S30-495/MR





MBB Half-cell Monofacial Full-black Module (54)

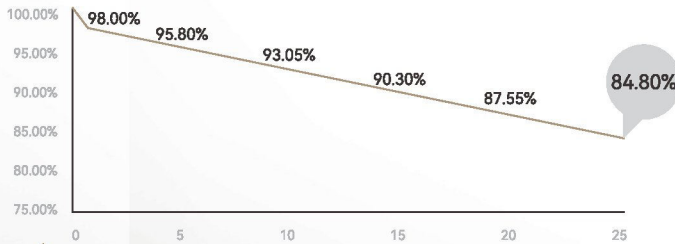
TW400~420MAP M10-108-H-F

PRODUCT FEATURES

- High Power Output Low LCOE
- Maximum Power 420W*
- High Reliability
- Low LID

POWER WARRANTY

1st year <2%, 0.55% power degradation per year from 2 to 25 years



15 15-year warranty for materials

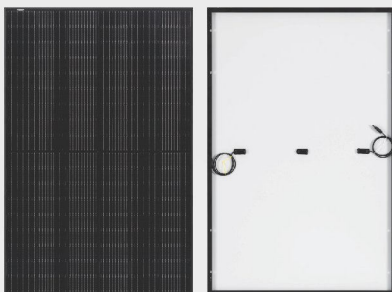
25 25-year warranty for linear power output

MANAGEMENT SYSTEM AND PRODUCT CERTIFICATION

ISO45001: 2018/Occupational Health and Safety Management System

ISO14001: 2015/Environment Management System

ISO9001: 2015/Quality Management System



Front

Rear



Electrical Characteristics (STC)

Module type: TW***MAP-108-H-F

Maximum power: Pmax (W)	400	405	410	415	420
Open circuit voltage: Voc (V)	37.08	37.23	37.38	37.53	37.68
Short circuit current: Isc (A)	13.77	13.87	13.92	13.95	13.98
Voltage at maximum power point: Vmp (V)	30.58	30.73	30.88	31.03	31.18
Current at maximum power point: Imp (A)	13.08	13.18	13.28	13.38	13.47
Module efficiency: η (%)	20.5	20.7	21.0	21.3	21.5

STC: Irradiance 1000W/m², Cell Temperature 25°C, Air Mass1.5, Measuring tolerance: \pm 3%

Electrical Characteristics (NMOT)

Maximum power: Pmax (W)	302.8	306.6	310.3	314.1	317.9
Open circuit voltage: Voc (V)	34.72	34.86	35	35.15	35.29
Short circuit current: Isc (A)	10.82	10.9	10.97	11.05	11.12
Voltage at maximum power point: Vmp (V)	28.76	28.9	29.04	29.18	29.32
Current at maximum power point: Imp (A)	10.52	10.6	10.68	10.76	10.84

NMOT: Irradiance 800W/m², Ambient Temperature 20 °C, Air Mass1.5, Wind Speed 1m/s

Mechanical Parameters

Cells	P-TPC
Orientation	108 (6×18)
Size	1722 \pm 2×1134 \pm 2×30mm
Weight	20.5kg
Glass	3.2mm AR coated heat strengthened glass
Backsheet	Black inside and white outside/Full black
Frame	Anodized aluminum alloy frame
Junction Box	IP68, 3 diodes
Cable	4.0mm ² , Positive: 400mm, Negative: 200mm, length can be customized
Connector	MC4 Compatible or MC4 original
Wind/Snow Load	2400Pa/5400Pa
Packaging	36pcs per pallet , 936pcs per 40'HC

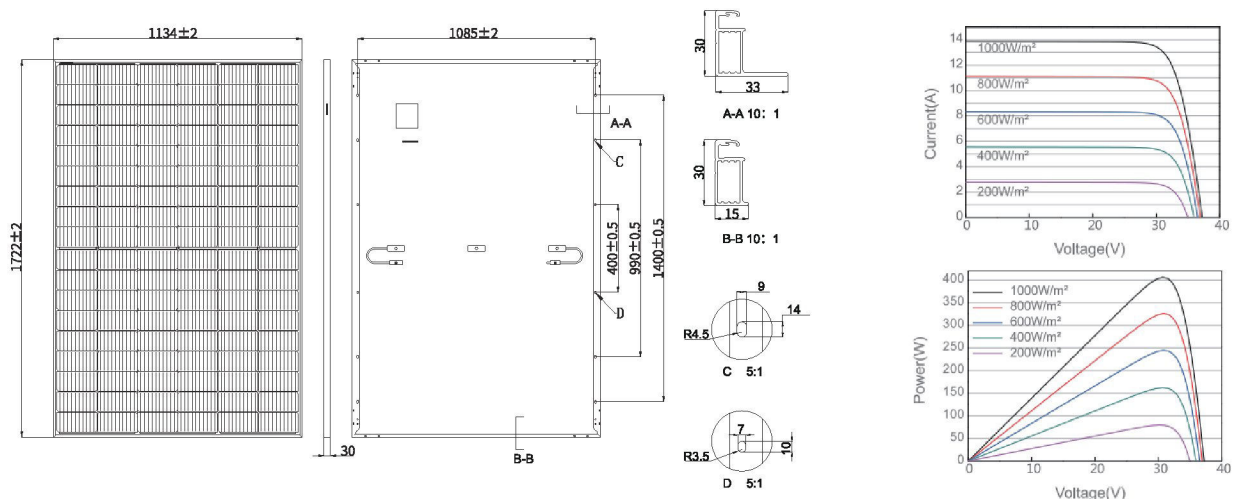
Operating Parameters

Operational Temperature	-40°C~+85°C
Maximum System Voltage	1500V DC
Maximum Series Fuse Rating	25A
Power Output Tolerance	0~+5W

Temperature Ratings

Temperature Coefficient (Pmax)	-0.34%/°C
Temperature Coefficient (Voc)	-0.27%/°C
Temperature Coefficient (Isc)	+0.045%/°C
NMOT	45 \pm 2°C

Drawings (Unit: mm)

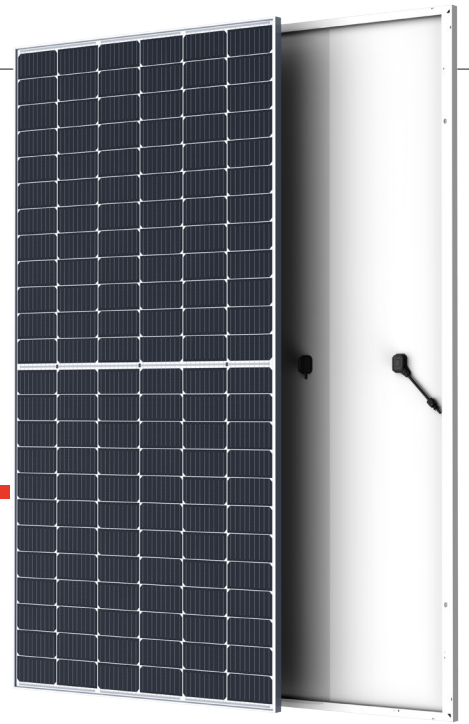


Email: sales@tongwei.com Web: www.tongwei.com.cn Add: 888 Changning Avenue, High-tech Zone, Hefei City, Anhui Province

With technological progress and product updates, there may be deviations between the technical parameters of Tongwei's module products and the technical parameters contained in this specification, and Tongwei Solar has the right to adjust the technical parameters at any time without notifying the customer, the final interpretation of the technical specification is vested in Tongwei Solar.

THE TALLMAX^M

FRAMED 144 LAYOUT MODULE



144 LAYOUT
MONOCRYSTALLINE MODULE

435-455W
POWER OUTPUT RANGE

20.8%
MAXIMUM EFFICIENCY

0~+5W
POSITIVE POWER TOLERANCE

PRODUCTS

TSM-DE17M(II)

POWER RANGE

435-455W

Founded in 1997, Trina Solar is the world's leading total solution provider for solar energy. With local presence around the globe, Trina Solar is able to provide exceptional service to each customer in each market and deliver our innovative, reliable products with the backing of Trina as a strong, bankable brand. Trina Solar now distributes its PV products to over 100 countries all over the world. We are committed to building strategic, mutually beneficial collaborations with installers, developers, distributors and other partners in driving smart energy together.

Comprehensive Products and System Certificates

IEC61215/IEC61730/IEC61701/IEC62716
ISO 9001: Quality Management System
ISO 14001: Environmental Management System
ISO14064: Greenhouse Gases Emissions Verification
ISO45001: Occupational Health and Safety Management System



High power



- Up to 455W front power and 20.8% module efficiency with half-cut and MBB (Multi Busbar) technology bringing more BOS savings
- Lower resistance of half-cut and good reflection effect of MBB ensure high power

High reliability



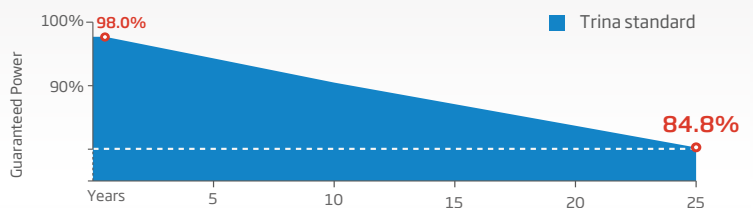
- Ensured PID resistance through cell process and module material control
- Resistant to salt, acid and ammonia
- Mechanical performance: Up to 5400 Pa positive load and 2400 Pa negative load

High energy generation

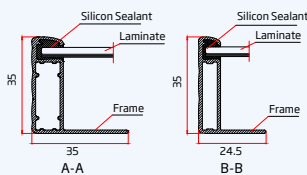
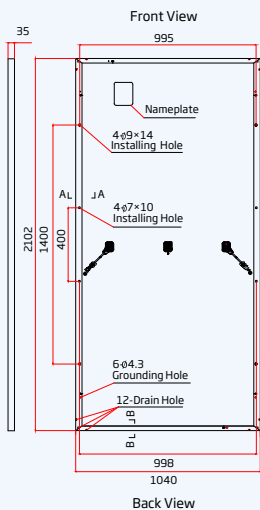
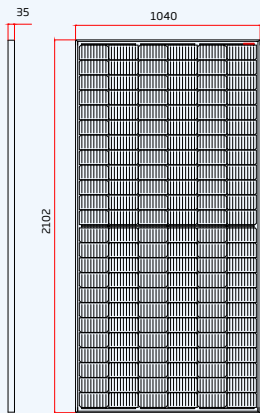


- Excellent IAM and low light performance validated by 3rd party with cell process and module material optimization
- Lower temp coefficient (-0.36%) and NMOT bring more energy leading to lower LCOE
- Better anti-shading performance and lower operating temperature

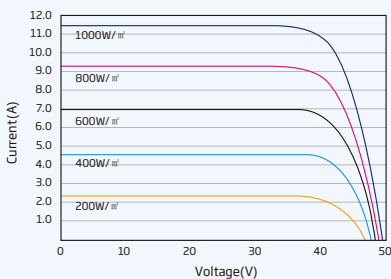
PERFORMANCE WARRANTY



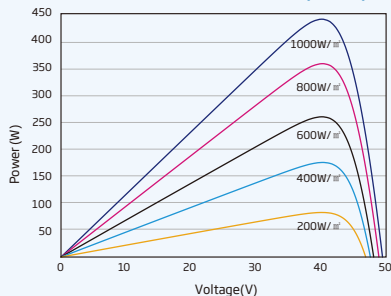
DIMENSIONS OF PV MODULE(mm)



I-V CURVES OF PV MODULE(445W)



P-V CURVES OF PV MODULE(445W)



ELECTRICAL DATA (STC)

Peak Power Watts- P_{MAX} (Wp)*	435	440	445	450	455
Power Tolerance- P_{MAX} (W)	0 ~ +5				
Maximum Power Voltage- V_{MPP} (V)	40.5	40.7	40.8	41.0	41.2
Maximum Power Current- I_{MPP} (A)	10.74	10.82	10.90	10.98	11.06
Open Circuit Voltage- V_{OC} (V)	49.0	49.2	49.4	49.6	49.8
Short Circuit Current- I_{SC} (A)	11.31	11.39	11.46	11.53	11.61
Module Efficiency η_m (%)	19.9	20.1	20.4	20.6	20.8

STC: Irradiance 1000W/m², Cell Temperature 25°C, Air Mass AM1.5.
*Measuring tolerance: ±3%.

ELECTRICAL DATA (NMOT)

Maximum Power- P_{MAX} (Wp)	329	333	336	340	344
Maximum Power Voltage- V_{MPP} (V)	38.2	38.4	38.5	38.7	38.9
Maximum Power Current- I_{MPP} (A)	8.61	8.68	8.73	8.80	8.86
Open Circuit Voltage- V_{OC} (V)	46.3	46.4	46.6	46.8	47.0
Short Circuit Current- I_{SC} (A)	9.11	9.17	9.23	9.28	9.35

NMOT: Irradiance at 800W/m², Ambient Temperature 20°C, Wind Speed 1m/s.

MECHANICAL DATA

Solar Cells	Monocrystalline
Cell Orientation	144 cells (6 × 24)
Module Dimensions	2102 × 1040 × 35 mm (82.76 × 40.94 × 1.38 inches)
Weight	24.0 kg (52.9lb)
Glass	3.2 mm (0.13 inches), High Transmission, AR Coated Heat Strengthened Glass
Encapsulant Material	EVA
Backsheet	White
Frame	35 mm (1.38 inches) Anodized Aluminium Alloy
J-Box	IP 68 rated
Cables	Photovoltaic Technology Cable 4.0mm ² (0.006 inches ²), Portrait: N 280mm/P 280mm(11.02/11.02inches) Landscape: N 1400 mm /P 1400 mm (55.12/55.12 inches)
Connector	MC4 EVO2 / TS4*

*Please refer to regional datasheet for specified connector.

TEMPERATURE RATINGS

NMOT (Nominal Module Operating Temperature)	41 C (±3 C)
Temperature Coefficient of P_{MAX}	- 0.36%/ C
Temperature Coefficient of V_{OC}	- 0.26%/ C
Temperature Coefficient of I_{SC}	0.04%/ C

(Do not connect Fuse in Combiner Box with two or more strings in parallel connection)

MAXIMUM RATINGS

Operational Temperature	-40~+85 C
Maximum System Voltage	1500V DC (IEC)
Max Series Fuse Rating	20A

WARRANTY

12 year Product Workmanship Warranty
25 year Power Warranty
2% first year degradation
0.55% Annual Power Attenuation

(Please refer to product warranty for details)

PACKAGING CONFIGURATION

Modules per box: 30 pieces
Modules per 40' container: 660 pieces